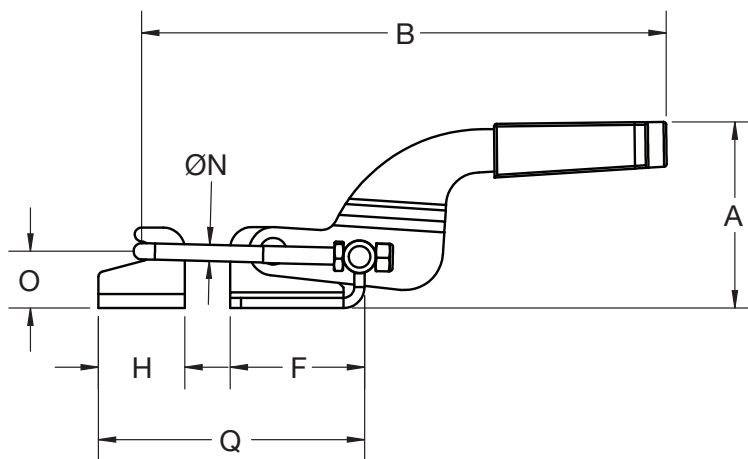
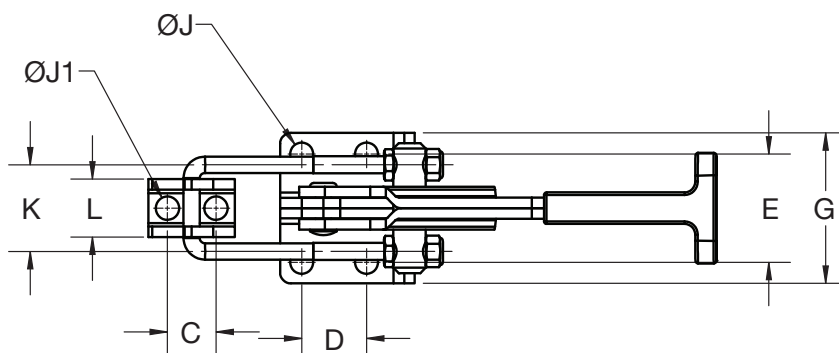
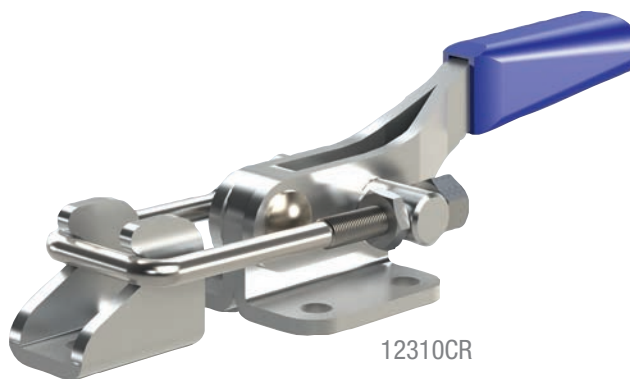


Model 1223

Špecifikácia

Zdvih:	mm [in.]
12230	46.0 [1.81]
12310	44.5 [1.75]
12410	63.5 [2.50]

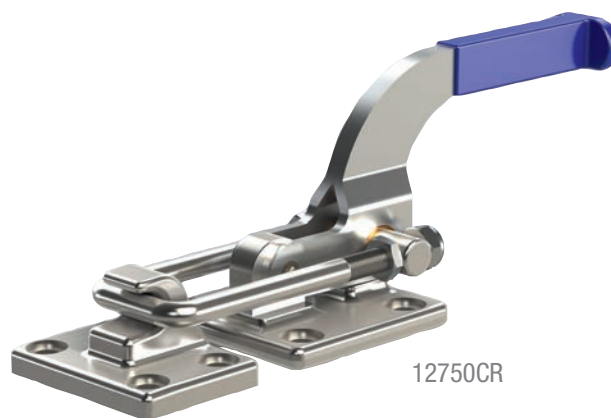


Model	Sila upnutia	Hmotnosť	A	B	C	D	E	F	G	H	J	J1	K	L	N	O	Q (MIN)	Q (MAX)
	N/lb.	Kg/lb.	mm/in.															
12230CR	1600	0,07	28	97.2	10	16	19	26	28	20	4.2	4.2	19	13.2	3.3	12	46	57.2
	360	0.15	1.10	3.83	0.39	0.63	0.75	1.02	1.10	0.79	0.17	0.17	0.75	0.52	0.13	0.47	1.81	2.25
12310CR	3200	0,25	54.5	154.1	14.3	19.1	31.8	39.5	44.1	25.4	6.7	6.9	25.4	17	4.8	16.7	64.9	78.2
	700	0.56	2.15	6.07	0.56	0.75	1.25	1.56	1.74	1.00	0.27	0.27	1.00	0.67	0.19	0.66	2.56	3.08
12410CR	8900	0,65	73.4	188.1	19.1	41.3	38.1	60.5	53.8	38.1	8.5	8.5	44.5	30.1	7.9	23.8	98.6	114.3
	2000	1.43	2.89	7.41	0.75	1.63	1.5	2.38	2.12	1.5	0.33	0.33	1.75	1.19	0.31	0.94	3.88	4.5

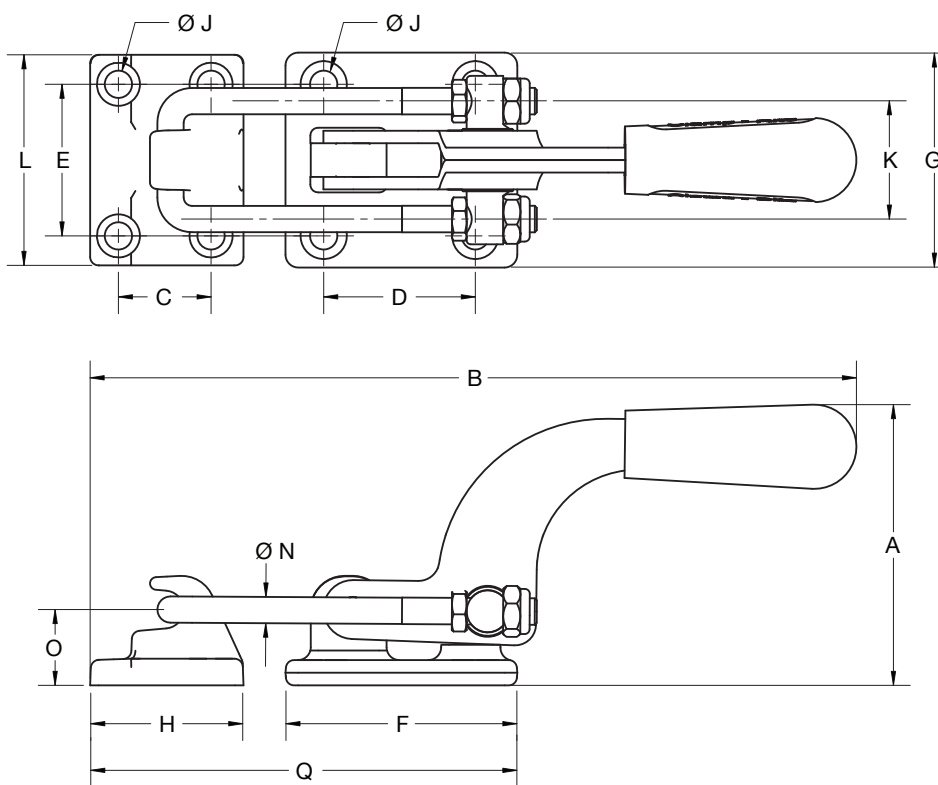
Model 1275

Špecifikácia

Zdvih:	mm [in.]
12750	89 [3.50]
12850	55.6 [2.19]



12750CR

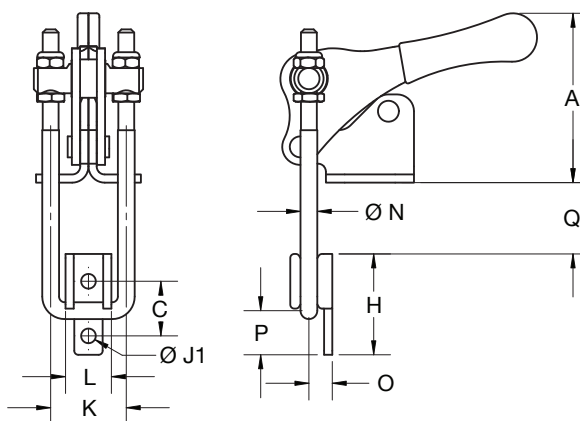
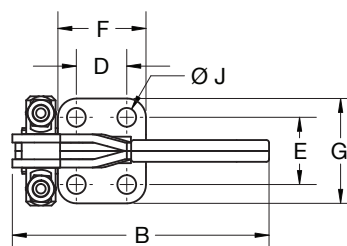


Model	Sila upnutia		A	B	C	D	E	F	G	H	J	K	L	N	O	Q (MIN)	Q (MAX)
	N/lb.	Kg/lb.															
12750CR	17.8kN	1.25	100.6	289.3	34.8	56.9	57.9	87.1	81.5	58.9	10.4	43.4	79.8	9.9	29.7	158	183.1
	4,000	2.78	3.96	11.39	1.37	2.24	2.28	3.43	3.21	2.32	0.41	1.71	3.14	0.39	1.17	6.22	7.21
12850CR	33.3kN	1.47	92.2	300	34.8	56.9	57.4	87.6	81	58.9	9.6	54.8	80.3	11.7	27.4	155.7	184.2
	7,500	3.26	3.63	11.8	1.37	2.24	2.26	3.45	3.19	2.32	0.38	2.16	3.16	0.46	1.08	6.13	7.25

Model 1224

Špecifikácia

Zdvih:	mm [in.]
12240	38.9 [1.53]
12340	50.8 [2.00]
12440	63.5 [2.50]



12340CR

Model	Sila upnutia		Hmotnosť	A	B	C	D	E	F	G	H	J	J1	K	L	N	O	P	Q (MIN)	Q (MAX)
	N/lb.	Kg/lb.																		
mm/in.																				
12240CR	1.6kN	0.11	51.4	88.3	14.3	12.7	22.4	25.4	35.1	25.4	5.2	4.4	20.6	13.3	3.5	4.7	11.1	12.95	23.4	
	360	0.25	2.03	3.48	0.56	0.5	0.88	1.00	1.38	1.00	0.20	0.17	0.81	0.52	0.14	0.19	0.44	0.51	0.92	
12340CR	3.1kN	0.27	63.9	103	20.6	19.1	25.4	33.3	39.6	38.1	7.1	5.6	28.6	17.3	6.4	8.8	16.7	16	34.1	
	700	0.55	2.52	4.06	0.81	0.75	1.00	1.31	1.56	1.50	0.28	0.22	1.13	0.68	0.25	0.35	0.66	0.63	1.34	
12440CR	8.9kN	0.70	91.4	133.4	26.9	31.8	37.3	47.2	53.6	54.1	8.6	8.9	44.2	30.2	7.9	12.7	20.1	54.4	53.6	
	2,000	1.54	3.60	5.25	1.06	1.25	1.47	1.86	2.11	2.13	0.34	0.35	1.74	1.19	0.31	0.50	0.79	2.14	2.11	

Model 1251

Špecifikácia

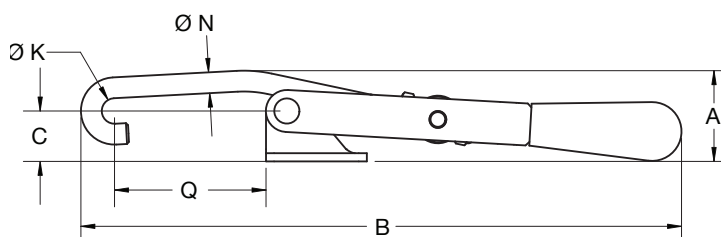
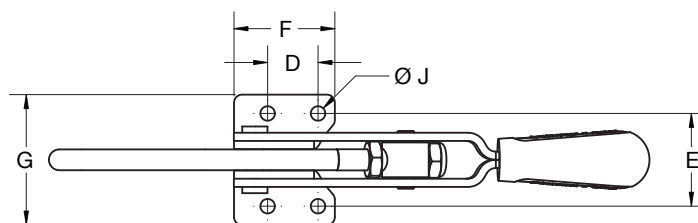
Zdvih:	mm [in.]
12510	101.6 [4.00]
12515	101.6 [4.00]
12710	136.7 [5.38]
12810	155.7 [6.13]



12510CR



12515CR



Model	Sila upnutia		A	B	C	D	E	F	G	J	K	N	Q (MIN)	Q (MAX)
	N/lb.	Kg/lb.												
			mm/in.											
12510CR	1670	0,28	32.9	214	15.5	19.1	34.7	38.1	48.9	5.5	9.7	7.9	43.6	54.6
	375	0.61	1.29	8.42	0.61	0.75	1.37	1.50	1.93	0.22	0.38	0.31	1.72	2.15
12515CR	1670	0,28	35.7	216.9	17.3	38.1	-	50.8	14.2	6.7	9.7	7.9	30.9	42.4
	375	0.61	1.41	8.54	0.68	1.50	-	2.00	0.56	0.27	0.38	0.31	1.22	1.67
12710CR	3340	0.62	55.1	298.5	34.5	31.8	49	47.2	66.3	8.9	12.7	9.5	68.6	87.4
	750	1.38	2.17	11.75	1.36	1.25	1.93	1.86	2.61	0.35	0.50	0.37	2.70	3.44
12810CR	4450	1.12	64.3	350.5	39.6	28.7	63.2	54.1	89	10	14.7	13	69.9	91.4
	1000	2.49	2.53	13.80	1.56	1.13	2.49	2.13	3.50	0.39	0.58	0.51	2.75	3.60

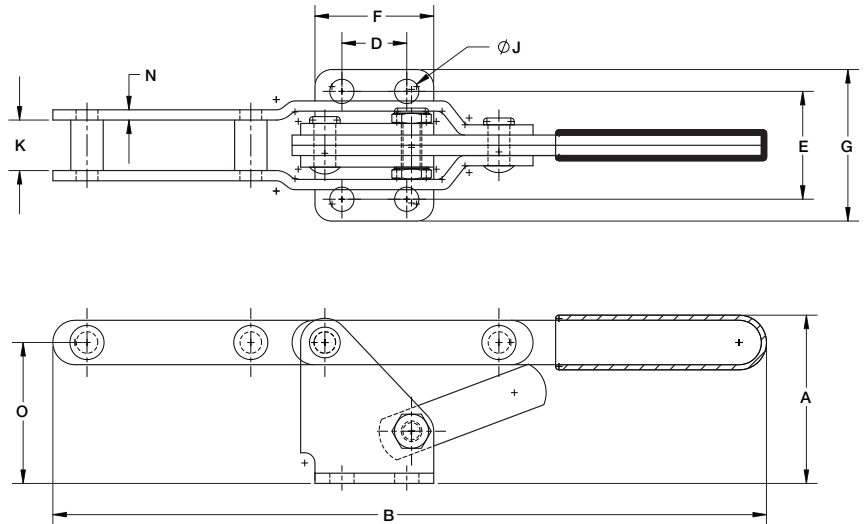
Model 1201

Špecifikácia

Zdvih:	mm [in.]
12010CR	101.6 [4.00]



12010CR

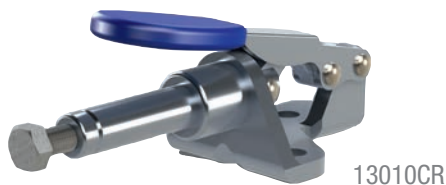


Model	Sila upnutia	Hmotnosť	A	B	D	E	F	G	J	K	N	O
	N/lb.	Kg/lb.	mm/in.									
12010CR	1670	0.31	47.8	213.4	19	31	35.1	43.7	7.1	14.2	3	40.4
	375	0.68	1.88	8.4	0.75	1.22	1.38	1.72	0.28	0.56	0.12	1.59

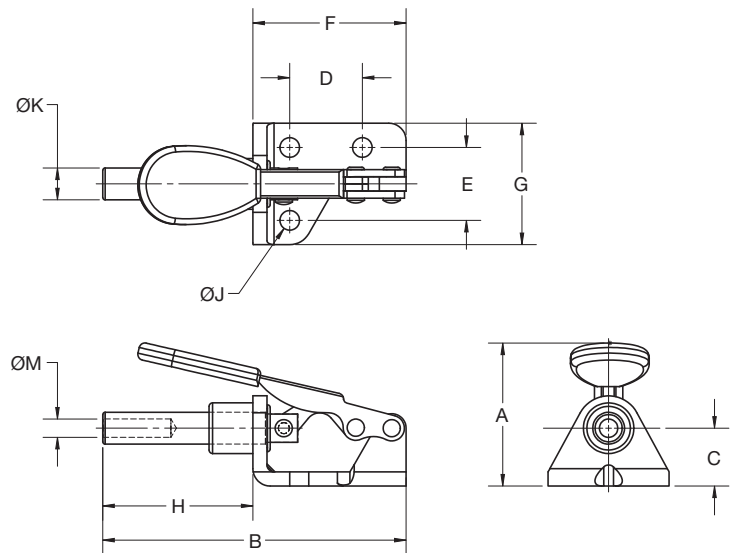
Ojnicové/Priamočiare upínače

Model 1301

Model	Zdvih	Prítláčná skrutka (dodávaná)
	mm/in.	
13010CR	16 0.63	19105CR
13010CRM	16 0.63	19421CR



13010CR



Model	Sila upnutia	Hmotnosť	Popis	A	B	C	D	E	F	G	J	K	M
	N	Kg		mm									
13010CR	440	0,04	Vodorovná päťka, Imperiálny závit	39.1	66.9	12.7	16	16	33.8	26.7	4.3	6.2	#8-32
	100	0.09		1.54	2.63	0.5	0.63	0.63	1.33	1.05	0.17	0.25	
13010CRM	440	0,04	Vodorovná päťka, Metrický závit	39.1	66.9	12.7	16	16	33.8	26.7	4.3	6.2	M4
	100	0.09		1.54	2.63	0.5	0.63	0.63	1.33	1.05	0.17	0.25	